

# MONTHLY MEMBERSHIP PROGRESS REPORT

District 201Q3

Results as of: 5/31/2020

GMT:

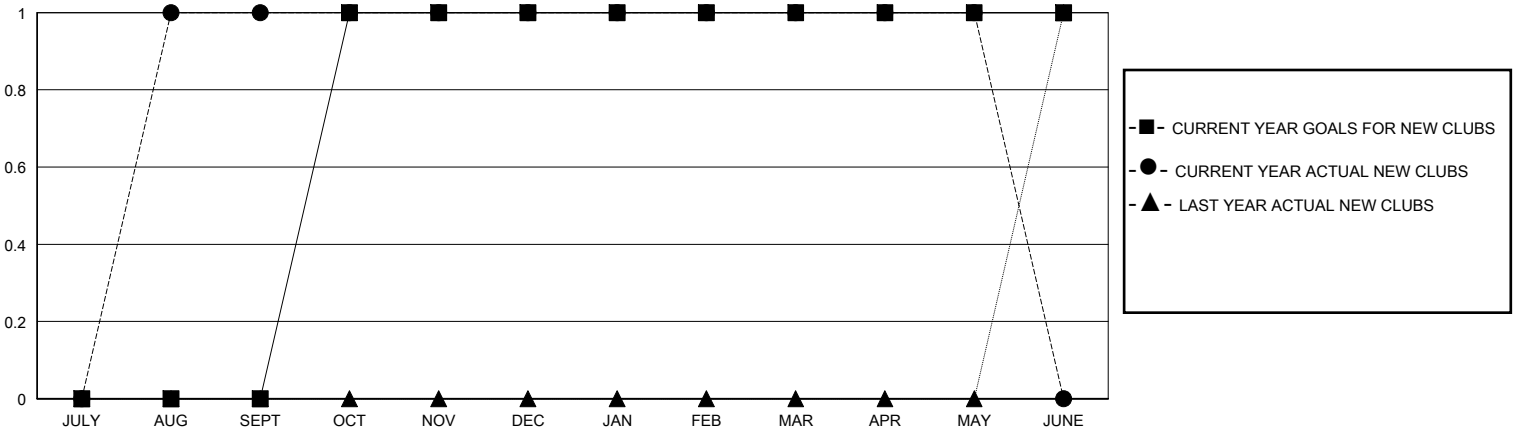
LOCATION AUSTRALIA

GMT CA

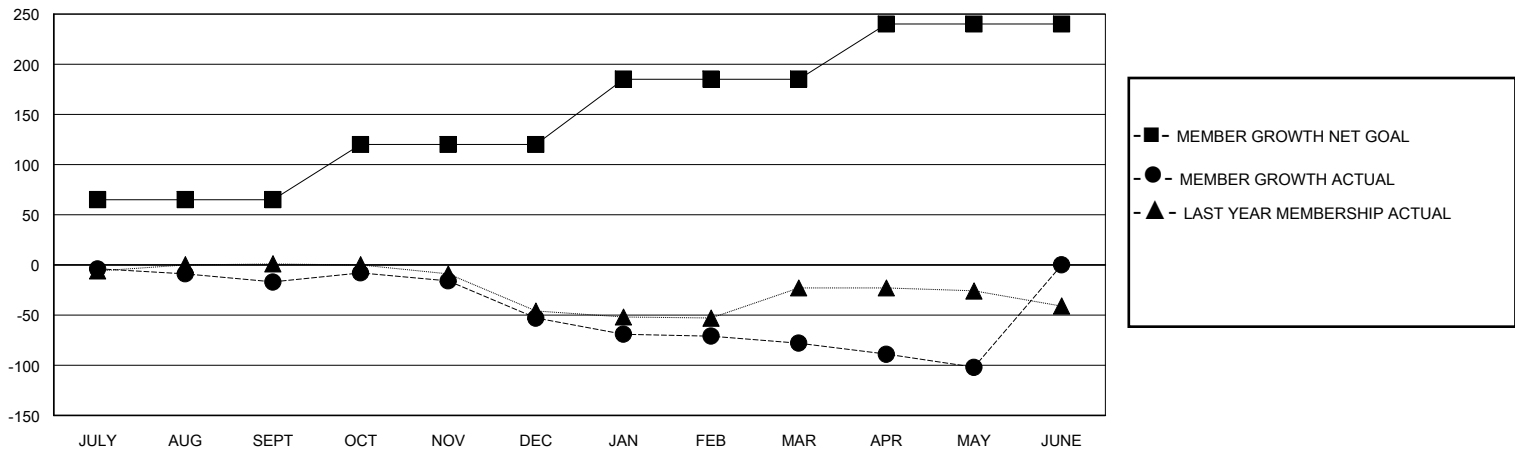
Clubs			
RESULTS FOR 2019-2020			
QUARTER	NEW CLUB GOAL	NEW CLUBS	DROPPED CLUBS
JULY/AUG/SEPT	0	1	0
OCT/NOV/DEC	1	0	0
JAN/FEB/MAR	0	0	0
APR/MAY/JUNE	0	0	0

Members			
RESULTS FOR 2019-2020			
QUARTER	MEMBER GROWTH NET GOAL	MEMBER GROWTH ACTUAL	DROPPED MEMBERS ACTUAL (including transfers)
JULY/AUG/SEPT	65	77	85
OCT/NOV/DEC	55	58	81
JAN/FEB/MAR	65	54	71
APR/MAY/JUNE	55	25	40

GOALS AND ACTUAL NEW CLUBS CUMULATIVE



GOALS AND ACTUAL MEMBERS CUMULATIVE



DROPPED CLUBS: 0

52 CLUBS OF 74 ADDED 1 OR MORE NEW MEMBERS

GENDER DISTRIBUTION

MALE 957 (58.46%)  
FEMALE 680 (41.54%)

DROPPED MEMBERS

DECEASED	26
CLUB CANCELLED	0
OTHER	251
<b>TOTAL</b>	<b>277</b>

[CLICK HERE FOR CUMULATIVE MEMBERSHIP DATA](#)

TOTAL FAMILY UNIT MEMBERS	374
FAMILY MEMBERS PAYING HALF DUES	189